

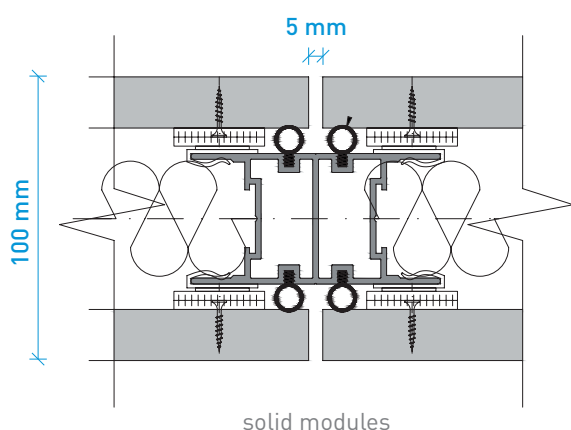
RAVA®

CONCEALED LOAD-BEARING STRUCTURE WITH A NEGATIVE DETAIL JOINT

The load-bearing structure is completely hidden, which allows the **partition facing to be the dominant feature**. The individual panels are fastened with patented hidden anchors for quick installation.

The recessed doors, which effectively complement its elegant design, are part of the system.

MODULE CONNECTION



TECHNICAL SPECIFICATIONS

BASIC INFORMATION:

Use:	non-bearing interior partition walls
Modules:	solid
Module connection:	negative detail joint width 5 mm
Ceiling connection:	to the existing structure of the ceiling or suspended ceiling
Supporting structure:	concealed aluminium profiles

AIRBORNE SOUND INSULATION Rw:

Solid partition:	46 dB
Door leaf:	all-glass 32 dB Wooden 27, 32, 35, 37 dB Aluminium 27, 32, 37 dB GlassDesign 27, 32, 37 dB

STANDARD DIMENSIONS:

Thickness:	100 mm
Width:	1,000 mm
Height:	2,800 mm (max. 3,000 mm)

STANDARD DOOR DIMENSIONS:

Door leaf:	875 × 2,115 mm
Leaf thickness:	100 mm / 40 mm
Max. door frame height:	3,000 mm

DOOR:

Door leaf types:	all-glass / wood / aluminium / GDD
Door frame types:	wooden, aluminium
Standard hinges:	Just 3D, hidden 3D, hidden Tectus

ANCHORING:

Concrete floor:	dowel pins 6 × 35
Double/wooden floor:	TN 3.5 × 35, FN 4.2 × 45
Lining from SDK:	FN 4.2 × 45, Turbo dowel
Concrete/masonry lining:	dowel pins 6 × 35
Suspended ceiling solid SDK/cassette:	TN 3.5 × 35, FN 4.2 × 45
Concrete/ceramic ceiling:	dowel pins 6 × 35

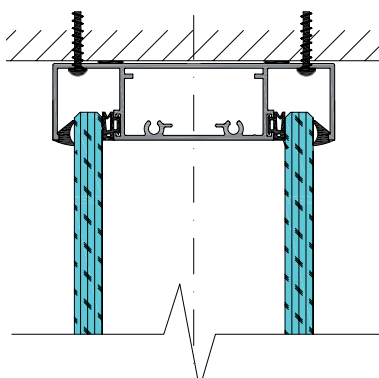


“Design played a key role in the development of this system. The resulting minimalist gap is proof of that.”

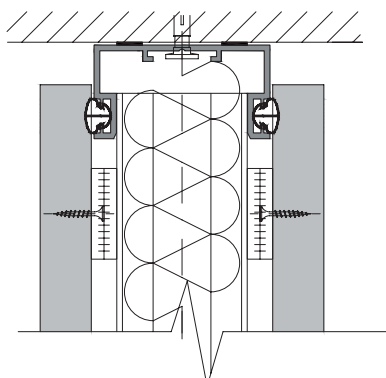
Ing. Ladislav Ravas | Technical Director LIKO-S



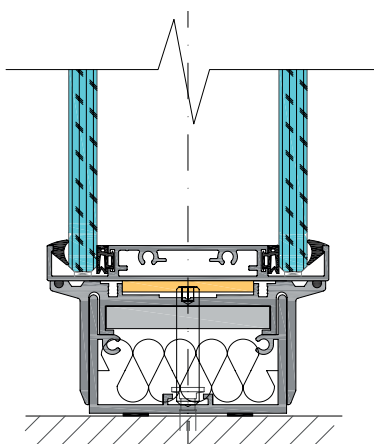
SYSTEM DETAILS | VERTICAL SECTION



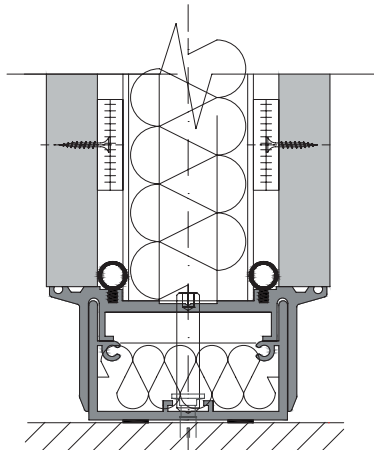
Termination at the ceiling | glazed module



Termination at the ceiling | solid module

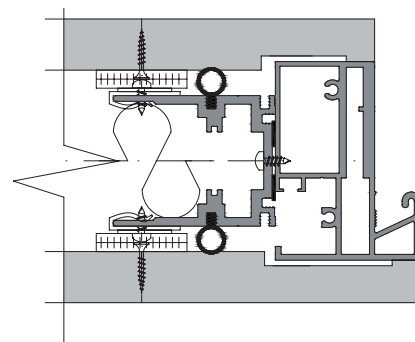


Termination at the floor | glazed module

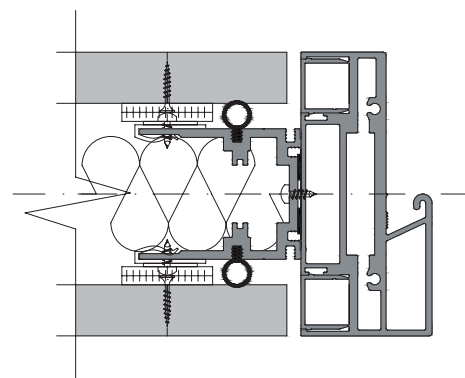


Termination at the floor | solid module

DOOR FRAME DETAILS

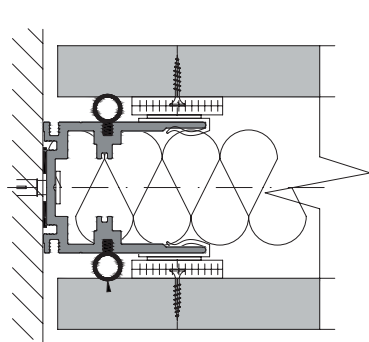


Door frame P07

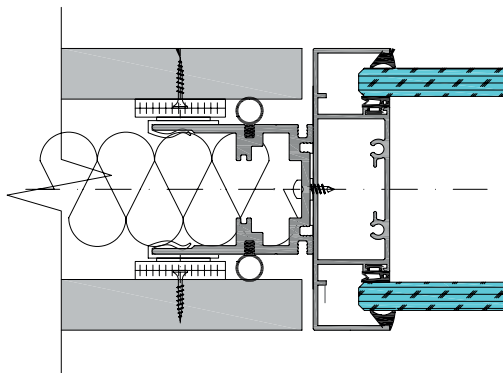


Door frame P09

SYSTEM DETAILS | HORIZONTAL SECTION



Termination at the wall | solid module



Module connection | solid and glazed



Headquarters:

LIKO-S, a. s.
U Splavu 1419
684 01 Slavkov u Brna
Czech Republic

+420 5 44 22 11 11 | info@liko-s.com

www.liko-partitions.com

Become one of our fans and be part of the story...



FACEBOOK



YOUTUBE



LINKEDIN