



INSTALLATION PANELS

AP1 | AP | WP2 | RP2

For the placement of switches or reservation systems, our partitions are supplemented with an installation pole, which hides the necessary power cables.

The material can be matched to the doors or profiles of the system.

“The door is the most important part of the partition.
That’s why every detail is very important.”

Orraine J. Williams | R&D Director



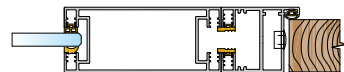
INSTALLATION PANEL | AP1 | ALUMINIUM PANEL SINGLE

TECHNICAL SPECIFICATIONS:

Description:	installation panel
Variant:	
Material:	aluminum, colouring according to RAL
For systems:	Micra I

DIMENSIONS:

Width:	140 mm
Thickness:	70 mm



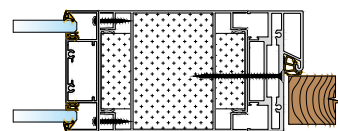
INSTALLATION PANEL | AP2 | ALUMINIUM PANEL DOUBLE

TECHNICAL SPECIFICATIONS:

Description:	installation panel
Variant:	
Material:	aluminum, colouring according to RAL
For systems:	Micra I Micra II Omega RAVA

DIMENSIONS:

Width:	125 mm
Thickness:	100 mm



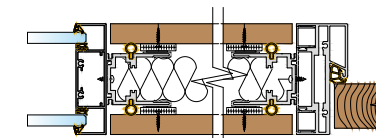
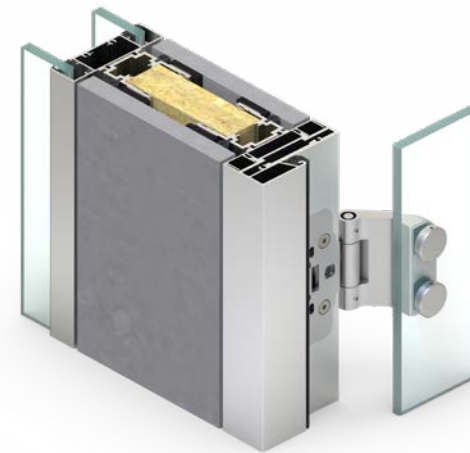
INSTALLATION PANEL | WP2 | WOOD PANEL

TECHNICAL SPECIFICATIONS:

Description:	installation panel
Variant:	
Material:	LTD veneer HPL DTD varnished MDF / sheet metal according to RAL
For systems:	Micra II Omega RAVA

DIMENSIONS:

Width:	optional
Thickness:	100 mm



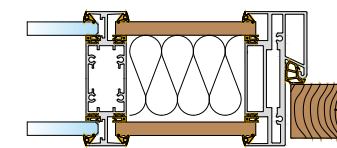
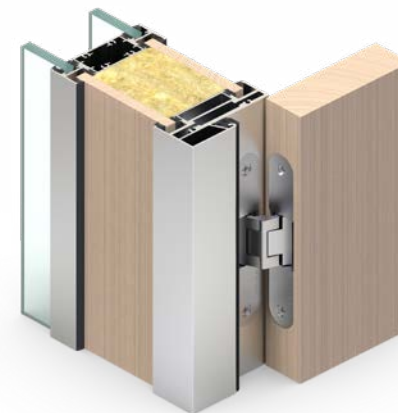
INSTALLATION PANEL | RP2 | RAVA PANEL

TECHNICAL SPECIFICATIONS:

Description:	installation panel
Variant:	
Material:	LTD veneer HPL DTD varnished MDF / sheet metal according to RAL
For systems:	Micra II Omega RAVA

DIMENSIONS:

Width:	optional
Thickness:	100 mm





Headquarters:

LIKO-S, a. s.
U Splavu 1419
684 01 Slavkov u Brna
Czech Republic

+420 5 44 22 11 11 | info@liko-s.com

www.liko-partitions.com

Become one of our fans and be part of the story...



FACEBOOK



YOUTUBE



LINKEDIN