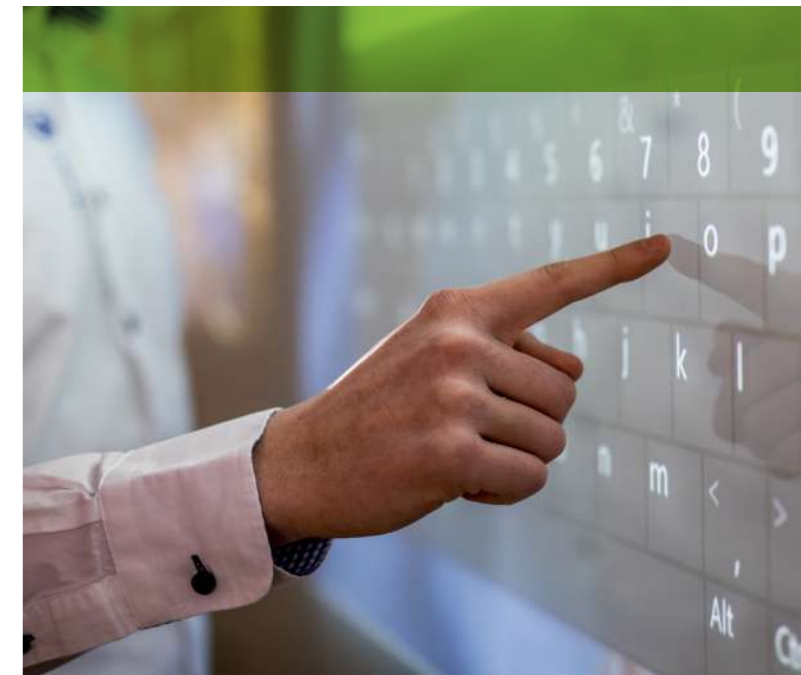


SMART-i-WALL[®]
BY LIKOS





MORE THAN GLASS



A comprehensive solution developed and patented by LIKO-S which integrates touch technology with the office partition turning your partition to functioning tool.



Enjoy high quality image projected on the glass



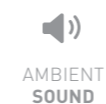
Manipulate content with multi-gesture and multi-touch interactivity



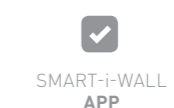
Toggle glass from frosty to transparent with the click of a button or via mobile device



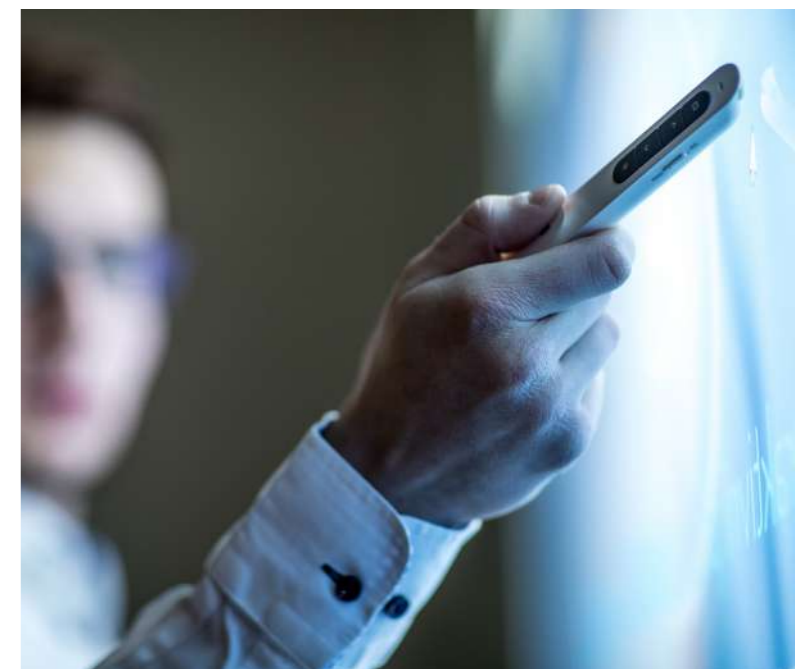
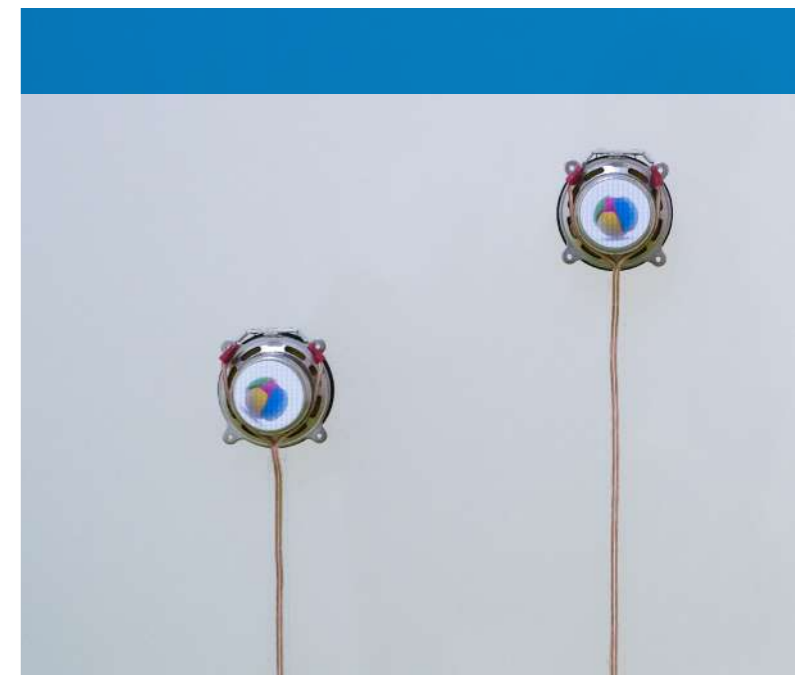
Connect and use any mobile device to share content or to use as a mouse pad.



Experience high quality sound directly from the glass partition



Easy to use app provides a unified interface for your favourite tools and content in multiple languages.



DESIGNED FOR YOU



Delivered as a turnkey solution, SMART-i-WALL is designed to fit your space and configured for your needs.



Small processor with big power.



Work within familiar Windows environment with familiar programs such as Word, PowerPoint, etc.



Automatic calibration, shutdown and other rules



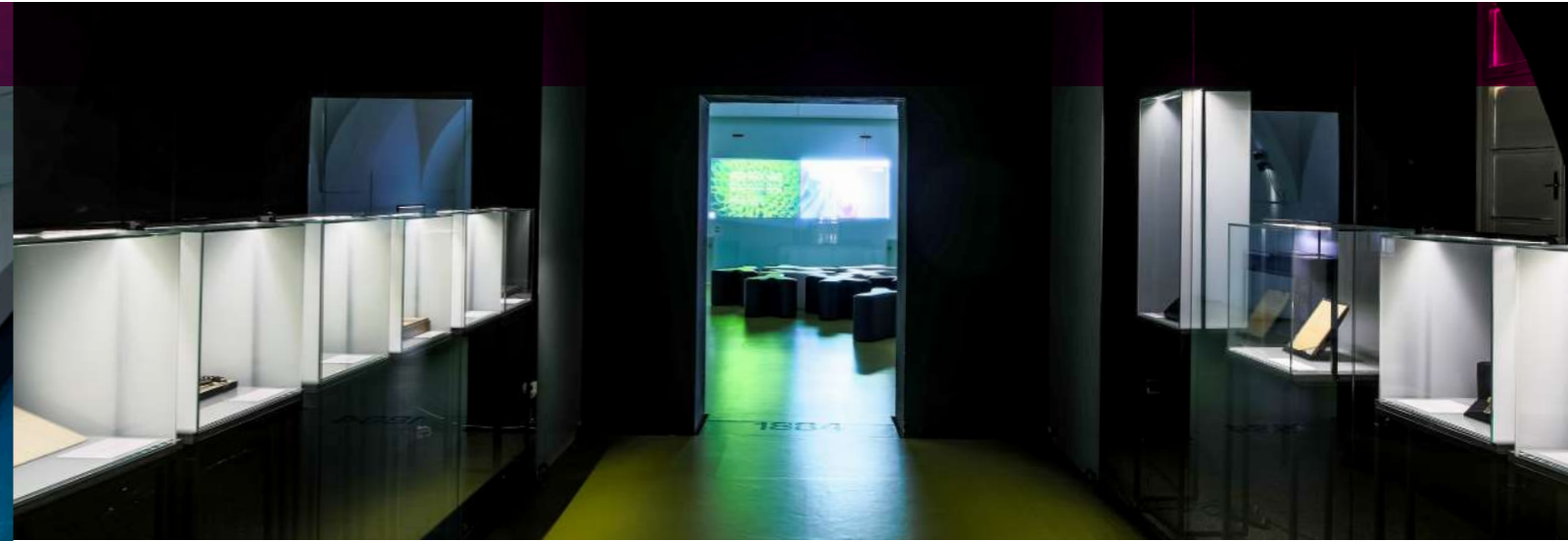
Passive USB stylus with laser pointer is available to substitute for touch



The system will make sure that everything stays up to date.



Available via technicians

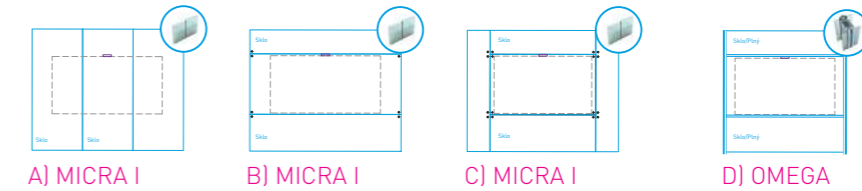


TECHNICAL SPECIFICATION



A designer glass partition loaded with functionality to boost the ambience of your work space.

1. BASIC DESIGN:



2. GLASS

Clear
Semi-transparent

Milky
Opaque

Electronic
Switchable

3. IMAGE SOURCE

Projector

Long or short range project

Display

55" - 85" inch LCD Display

INTERACTIVE SURFACE

Options:
Electronic glass

- Remote control (IR/WIFI/ Motion)
- 5% transparency - off
- 85% transparency - on
- <1 sec. transition speed
- Milky Glass (Industrial Matted)
- Single state

Maximum size of glass:
3500 x 1820mm

Standard width of interactive surface:
2000mm

Up to 4000mm interactive surface possible*

IMAGE ATTRIBUTES

Rear Projection
Ceiling mounted
Aspect ratio of 16:9/16:10

Projector:

- Classic range:
- 1080p (Full HD)
 - Throw distance 2800 - 4000mm
 - approximately 5000 lumens

Short range:

- 720p (HD)
 - Throw distance 1000 - 1500mm
 - Approximately 3000 lumens
- *multiple projectors may be combined to achieve larger image

Display:

- Classic range:
- Hi-Sense / Phillips / LG
 - 55 - 85 inch
 - LCD / LED
 - 4K resolution

AUDIO COMPONENTS

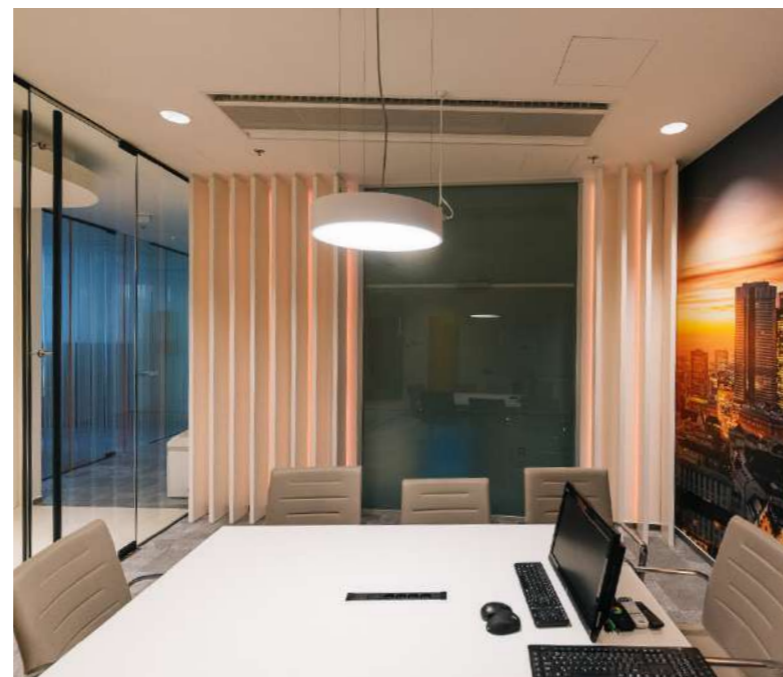
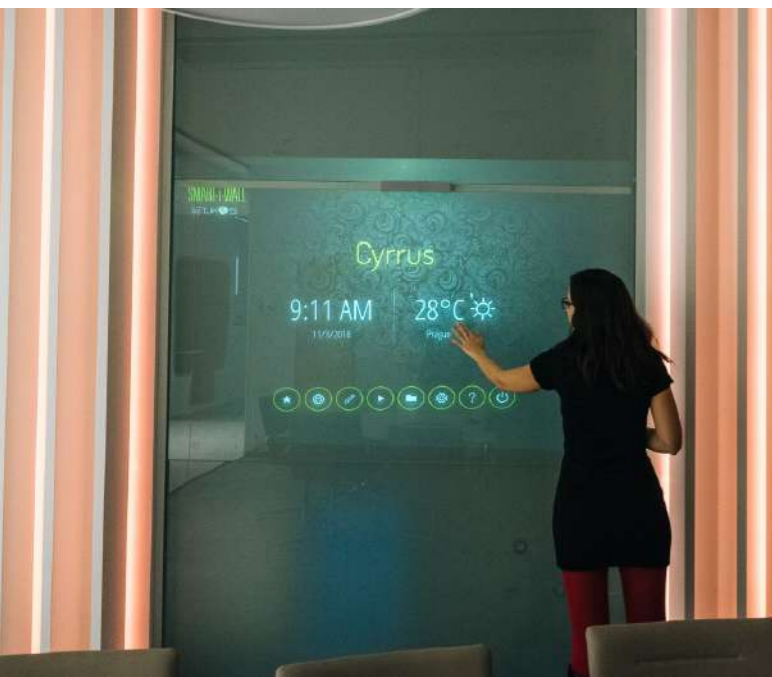
Full range transducer
Class T Amplifier

Options:

Sound from glass
Sound from solid module

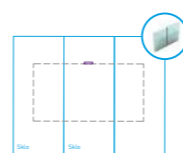
SMART-I-WALL APP

- Requires Windows 7 or higher
- Supports Airplay, Miracast, and Chromecast
- Multi language platform (CZ, EN, DE)
- Automatic Updates
- Remote access for support
- Automatic calibration
- Accuracy +/- 5 pixels
- Refresh rate 120fps
- CPU customized to specification
- High speed internet connection recommended



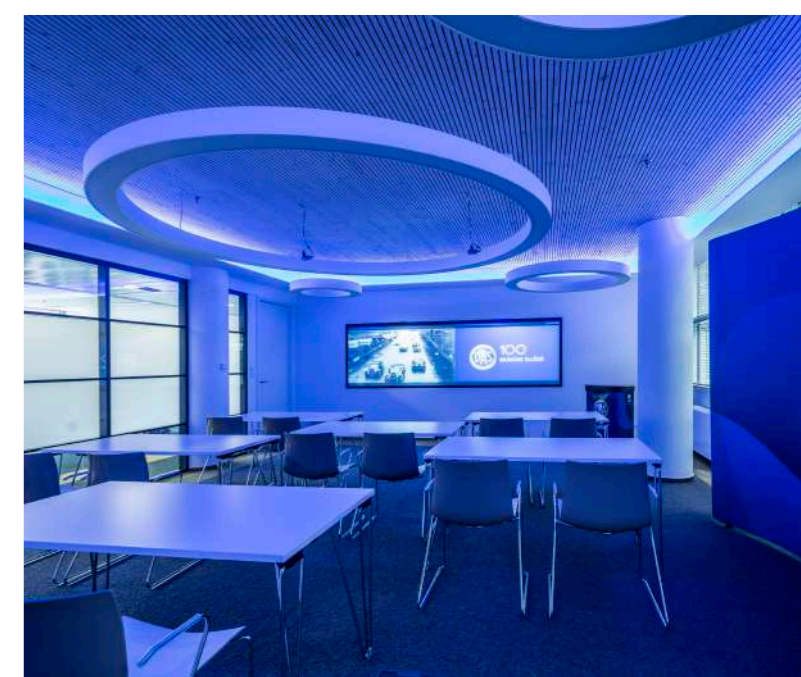
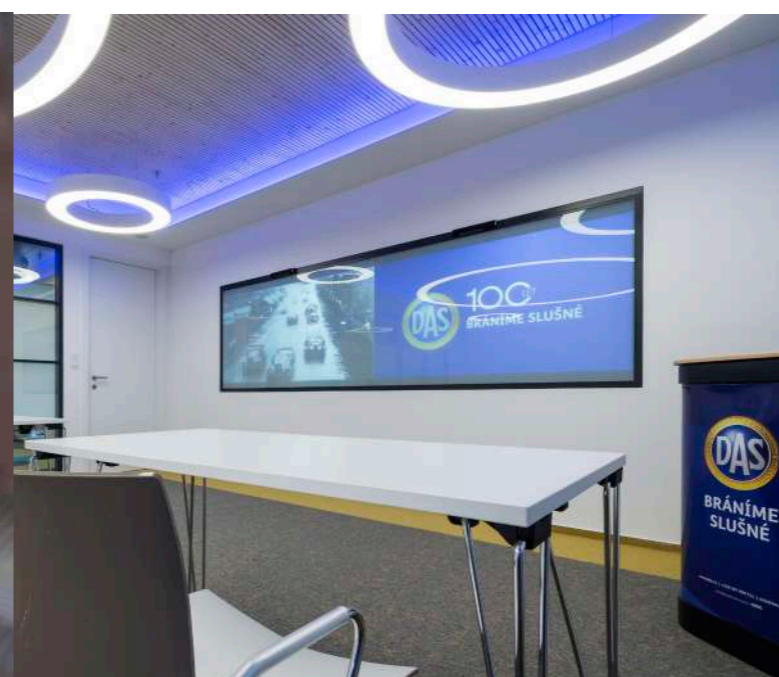
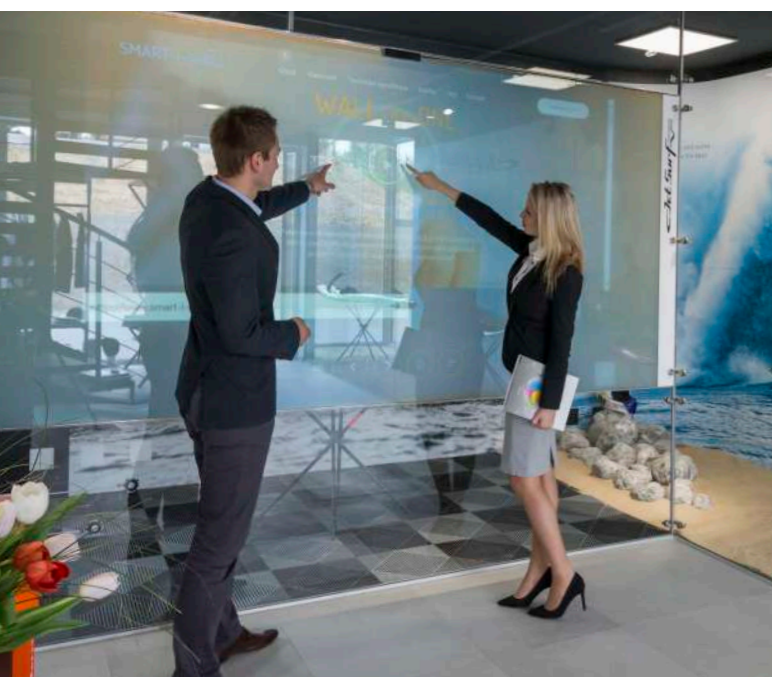
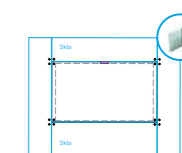
CYRRUS:

Place: FLORENTINUM, PRAGUE
 Year: 2016
 System: MICRA I / VARIANT A (HORIZONTAL LAYOUT)
 Function: HD, MULTITOUCH, MILKY GLASS, SOUND FROM GLASS
 Location: MEETING ROOM



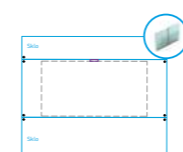
ZDENĚK FRÁNEK: MÍRA A MĚŘITKO

Place: GALERIE JAROSLAVA FRÁGNERA, PRAGUE
 Year: 19. 5. - 24. 7. 2016
 System: MICRA I / VARIANT C
 Function: FULL HD, MULTITOUCH, ELECTRONIC GLASS, AUTOMATIC OPACITY SWITCH, SOUND FROM GLASS
 Location: GALLERY



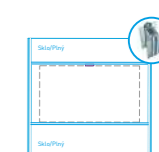
JETSURF:

Place: STŘELICE
 Year: 2016
 System: MICRA I / VARIANT B
 Function: HD, MULTITOUCH, ELECTRONIC GLASS, MANUAL OPACITY SWITCH, SOUND FROM GLASS
 Location: RECEPTION AREA



DAS PRAGUE

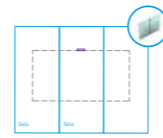
Place: BB CENTRUM, PRAGUE
 Year: 2017
 System: OMEGA / VARIANT D
 Function: ULTRA WIDE (32:9), MULTITOUCH, MILKY GLASS, SOUND FROM SOLID WALL
 Location: CONFERENCE ROOM





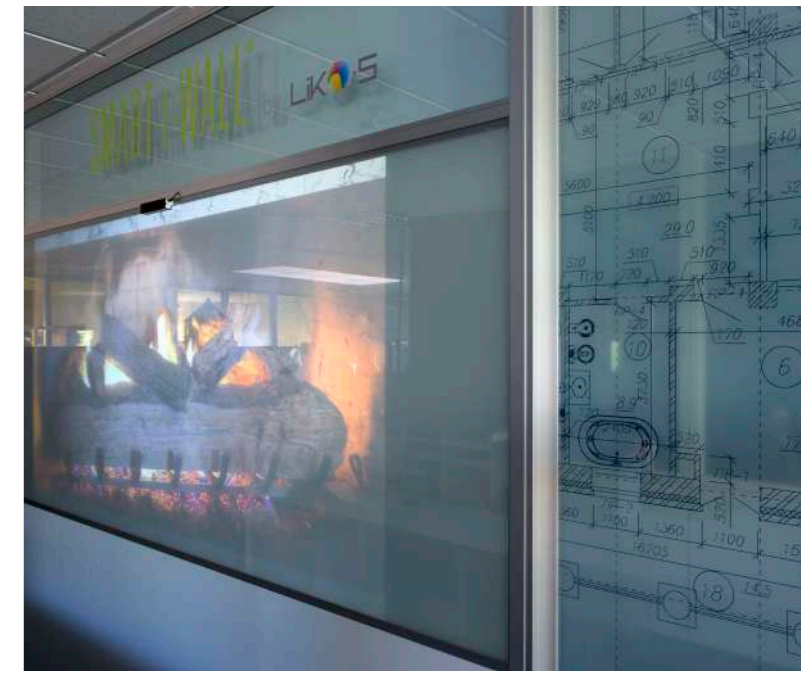
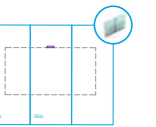
MENDEL MUSEUM:

Place: **BRNO**
 Year: **2016**
 System: **MICRA I / VARIANT A**
 Function: **ULTRA WIDE SCREEN (32:10), MULTITOUCH, ELECTRONIC GLASS, AUTOMATIC OPACITY SWITCH, SOUND FROM GLASS**
 Location: **GALLERY**



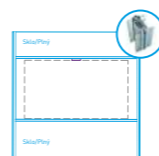
LIVING SHOWROOM PRAGUE:

Place: **JAKUBSKÁ, PRAGUE**
 Year: **2016**
 System: **MICRA I / VARIANT A**
 Function: **FULL HD, MULTITOUCH, ELECTRONIC GLASS, SYNCHRONIZED OPACITY SWITCH VIA SMART HOME MANAGEMENT, SOUND FROM GLASS, LIVING ROOM**
 Location: **LIVING ROOM**



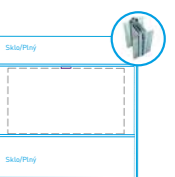
LIKO-NOE:

Place: **SLAVKOV U BRNA**
 Year: **2015**
 System: **OMEGA / VARIANT D**
 Function: **HD, MULTITOUCH, ELECTRONIC GLASS, OPACITY SWITCH - MOTION DETECTOR OR MANUAL OVERRIDE SWITCH**
 Location: **OPENSOURCE OFFICE**



BÜRO - SYSTEME - LEIPZIG

Místo: **ZWENKAU, GERMANY**
 Rok realizace: **2016**
 Systém: **OMEGA / VARIANT D**
 Funkce: **FULL HD, MULTITOUCH, ELECTRONIC GLASS, MANUAL OPACITY SWITCH**
 Location: **SHOWROOM**





ABOUT US



LIKO-S was founded in 1992 and is a family owned and operated company. It currently ranks among the leading European companies in its field.

All products are tested according to European norms in accredited testing institutes, including the environmental requirements of LEED.

ENERGY

Construction of administrative buildings, corporate headquarters, logistic and production halls. Research and application of Icyne®[®], revolutionary foam insulation system from Canada.

www.zivestavby.cz
www.liko-noe.com

PRODUCTION

We specialize in production using a wide range of materials: steel, stainless steel, aluminum, heat resistant materials. Fine machine processing from design to surface treatment. More than 90% of our production is exported outside the country.

www.weldinginausterlitz.com

INTERIORS

We supply modular interior systems, demountable walls and partitions, acoustic suspended ceilings, production hall space management systems, laminated LIKO-Glass® glazing, and interactive wall SMART-i-WALL® partitions. All the systems are developed and produced in our company.

www.liko-s.com

www.smartwall.com

LIKO-S, a.s.
U Splavu 1419
684 01, Slavkov u Brna

tel.: +420 5 44 22 11 11
email.: info@liko-s.cz
www.liko-s.cz