

## VACUWALL®

### TECHNICAL SPECIFICATION

A mobile wall without any significant modification of ceiling and floor.

<b>Easily relocable</b>	<i>composed of single elements</i>
<b>Excellent stability</b>	<i>every module „locks“ into another one</i>
<b>No hanging system/carrying construction</b>	<i>no statical load on the ceiling</i>
<b>Standard thickness of modules</b>	<i>100 mm</i>
<b>Standard width of modules</b>	<i>400, 800 mm (can be adjusted accordingly )</i>
<b>Standard height of modules</b>	<i>up to 4 000 mm</i>
<b>Standard width of door module</b>	<i>1030mm (clear passage 800mm)</i>
<b>Design</b>	<i>light and stable</i>
<b>Standard surface</b>	<i>lamino (white/grey)</i>
<b>Weight</b>	<i>ca. 22 kg/m<sup>2</sup></i>
<b>Compatible with</b>	<i>Omega; Micra II</i>
<b>Sound insulation</b>	<i>Rw= 39 dB (EN ISO 10140-2)</i>

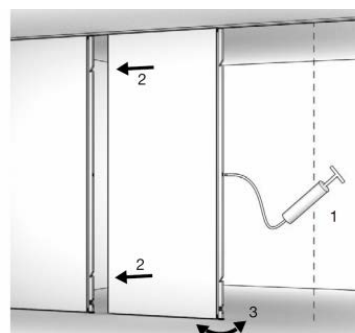
### VACUWALL OVERVIEW:

FULL – STANDARD / DOORMODULE / TELESKOP



### INSTALLATION OF THE PANELS

3 steps



### PARKING OPTIONS

