

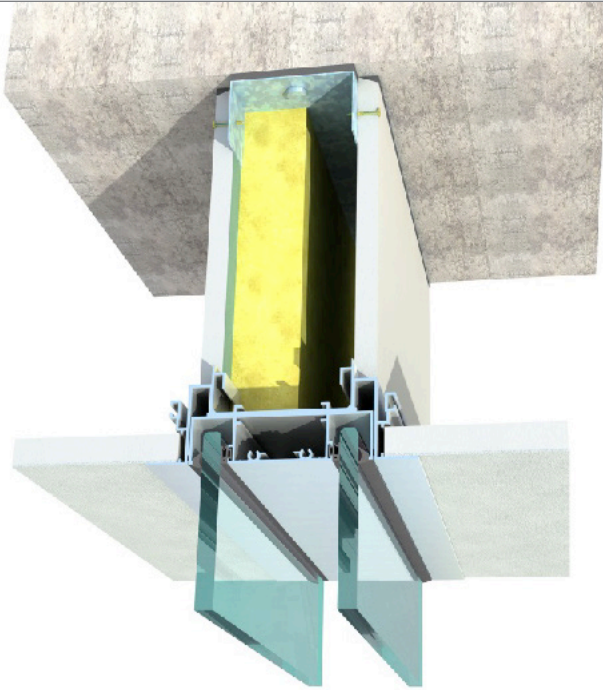


TIME FOR DETAIL

RECESSED CEILING PROFILES
CROSSTALK SOLUTION

Each detail is important for maximum acoustic properties. TFD solves the **elegant recessing of ceiling profiles** in connection with the acoustic barrier.

TFD can be applied to a 100 mm wide system – Omega and Micra II.



TECHNICAL SPECIFICATIONS

AIRBORNE SOUND INSULATION R_w :

Cotton acoustic crosstalk: 37 dB

SDK acoustic crosstalk: 45 dB

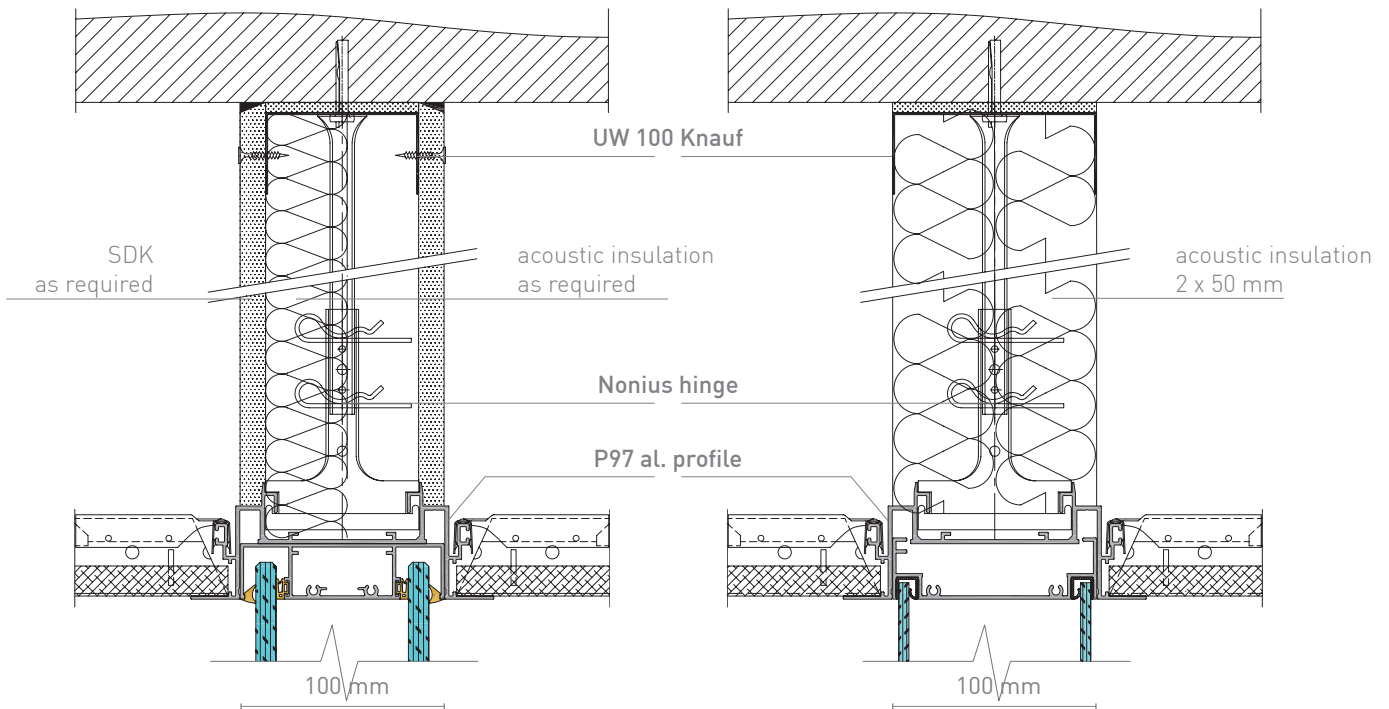
BASIC INFORMATION

For systems: Omega | Micra II

Acoustic barrier variants: mineral wool with aluminium film SDK

Applicable for: existing and new suspended ceilings

VERTICAL SECTION:



SDK acoustic barrier | $R_w = 45$ dB
Micra II system (also possible for Omega)

cotton wool acoustic barrier | $R_w = 37$ dB
Omega system (also possible for Micra II)