



LESA II SYSTEM

FRAMELESS PARTITION
DOUBLE GLAZED

The double-glazed LESA II system meets the **highest demands for acoustics** with a natural element complementing the LESA I wooden system.

Reversible doors are the ideal accessory for maintaining a clear line of sight.

“The LESA II system complements our all-wood single glazing system where the emphasis is placed on acoustics.”

Ing. Ladislav Ravas | Technical Director LIKO-S



TECHNICAL SPECIFICATIONS

BASIC INFORMATION:

Use:	non-bearing interior partition walls
Module connection:	double-sided adhesive tape or plastic profiles – w. 30 mm
Ceiling connection:	to the existing structure of the ceiling or suspended ceiling
Structure:	glass, aluminium, wood light and stable
Material:	veneered al. profiles
Accessories:	blinds / digital blinds

AIRBORNE SOUND INSULATION R_w :

Glazed module:	up to 45 dB
Door leaf:	All-glass 32 dB Wooden 27, 32, 35, 37 dB Aluminium 27, 32, 37 dB GlassDesign 27, 32, 37 dB

STANDARD DIMENSIONS OF THE GLAZED MODULE:

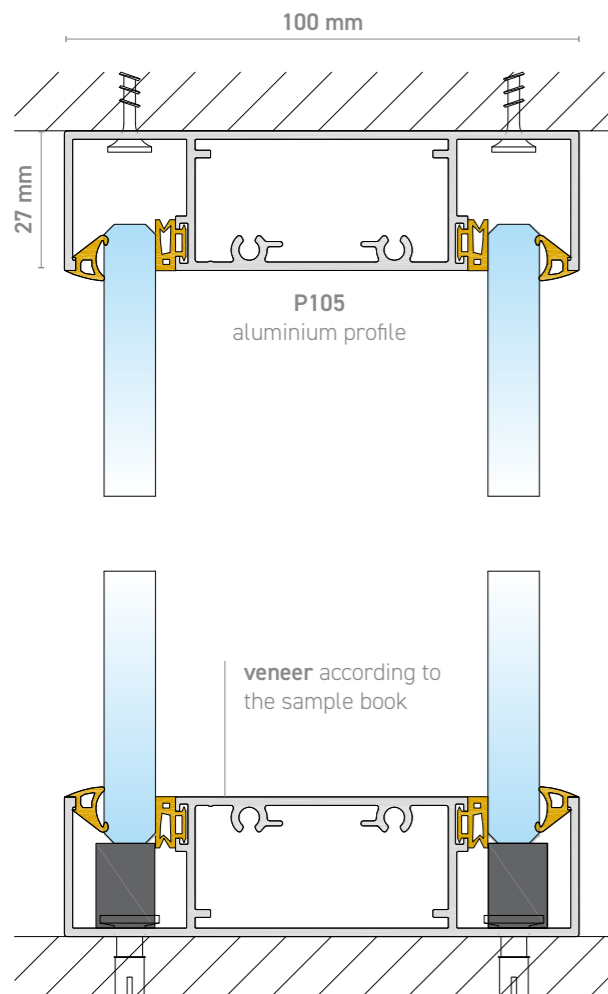
Thickness:	100 mm
Glass thickness:	10 mm
Width:	1,000 mm
Height:	3,000 mm (max. 3,500 mm)

STANDARD DOOR DIMENSIONS:

Clearance (passage):	800 x 2,100 mm
Door frame H90:	970 x 2,155 mm
Door frame H91:	970 x 2,155 mm
Max. door frame height:	3,000 mm

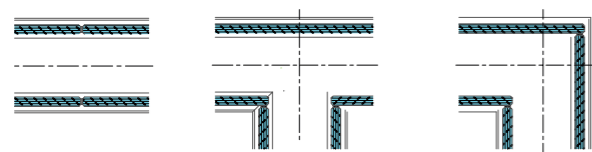
DOOR:

Door leaf types:	Aluminium GDD All-glass Wood
Door frame types:	Wooden
Standard hinges:	Just 3D, Just 3D Glass, 3D Tectus, 2D Tectus Glass

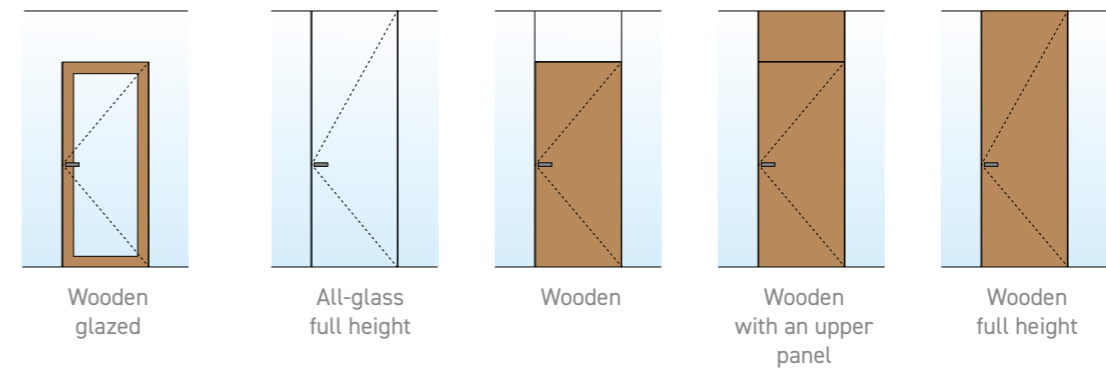


CONNECTION AND FINISHING:

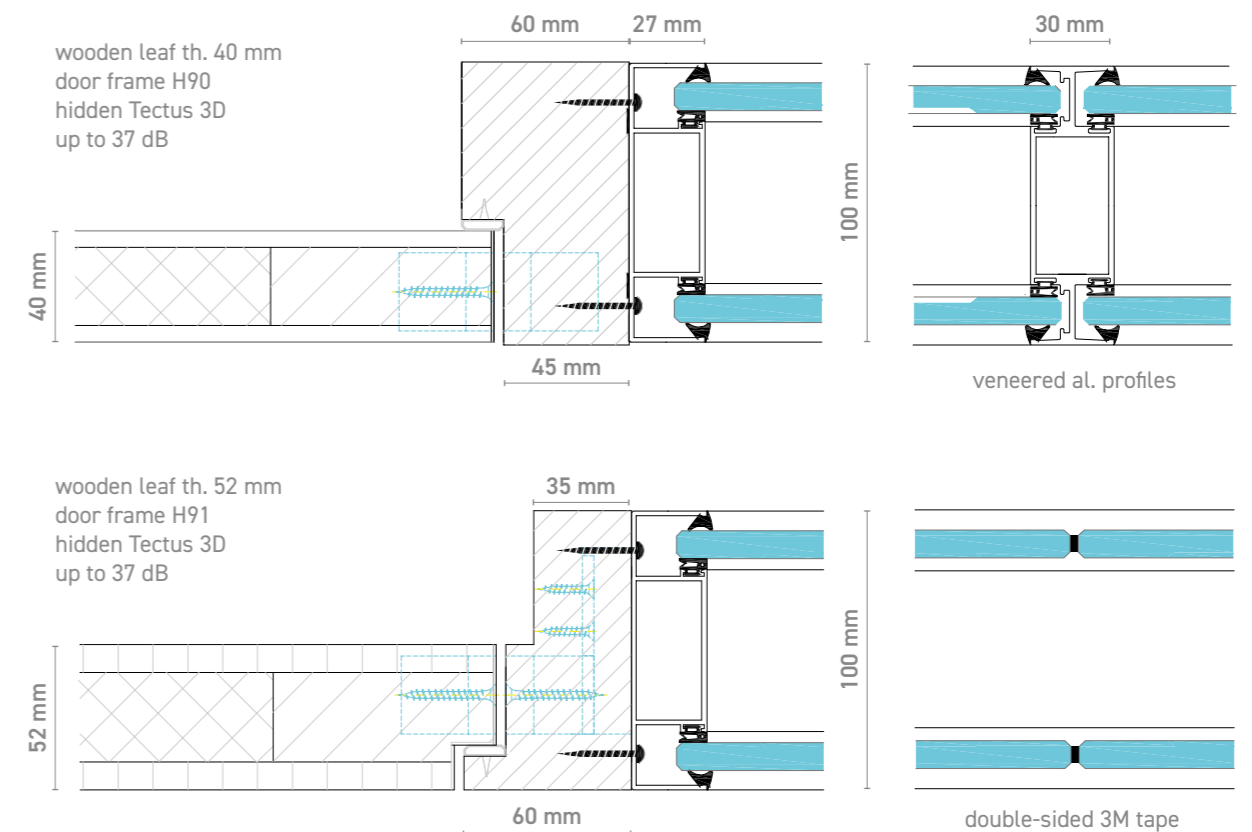
Connection Double-sided 3M adhesive tape or plastic profiles



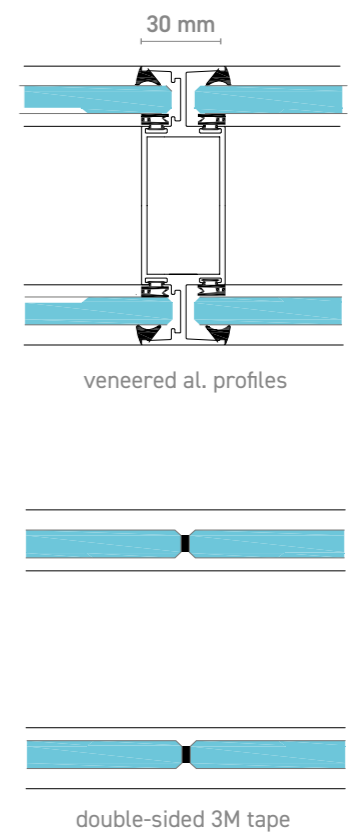
DOOR LEAF TYPES



DOOR FRAME DETAILS



CONNECTION OF MODULES





Headquarters:

LIKO-S, a. s.
U Splavu 1419
684 01 Slavkov u Brna
Czech Republic

+420 5 44 22 11 11 | info@liko-s.com

www.liko-partitions.com

Become one of our fans and be part of the story...



FACEBOOK



YOUTUBE



LINKEDIN