

SMART*i*WALL

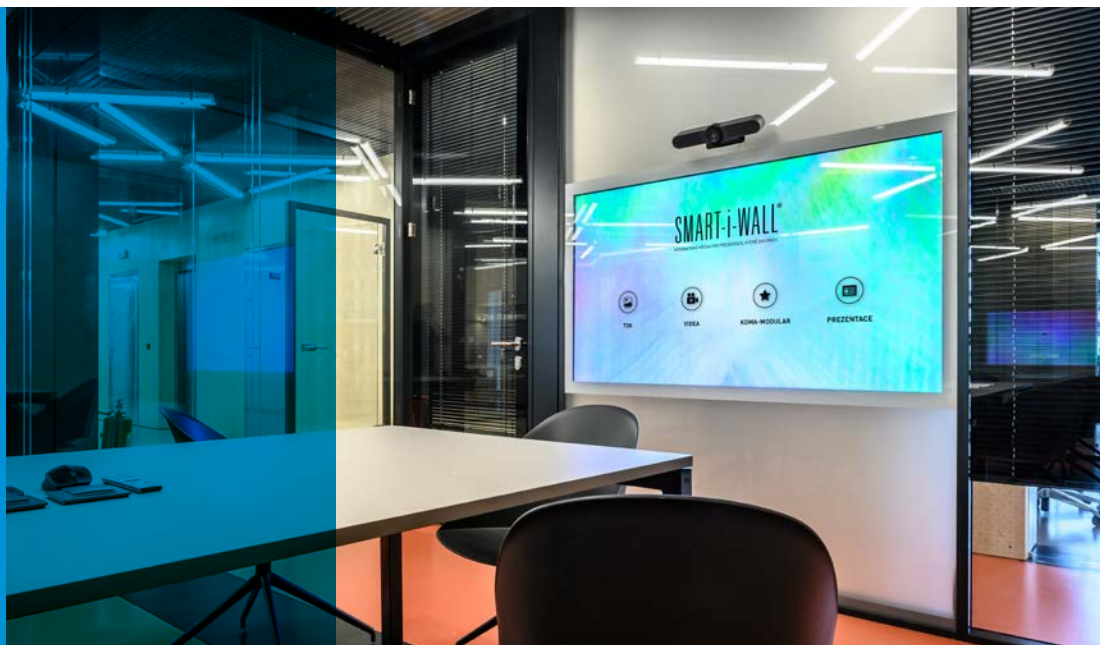
TECHNOLOGY **INTEGRATED** INTO PARTITION



04

SMART-I-WALL® SCREEN

4K UHD display with
up to **100 touch points**
supporting simultaneous
use by **multiple users**.



10

CONNECTIVITY AND INTERACTION

Touch, collaborate,
comment, share, present.



06

SMART-I-WALL® MOBILE

Everything your (home)
office needs in one design
panel. **On a stand or on the
wall.**



12

UNIQUE SOUND EXPERIENCE

Let the walls
and furniture play.



08

FUSION OF TECHNOLOGY AND DESIGN

Total integration
into our partitions.



14

CUSTOMIZATION

Choose the accessories
that **fit your needs**.



Project specification



Screen 75"



MICRA II



Table

SMART-i-WALL® SCREEN

Display with **4K UHD resolution** and **multitouch capability**, able to support multiple users at the same time.

Solid or glass back panel

4K UHD display

Touch membrane

Extra clear tempered glass

FEATURES AND FUNCTIONS



TOUCH CONTROL

Our capacity touch membrane features low latency and **up to 100 touch points** which allows simultaneous use by **multiple users**. Comment, draw, edit, and share **simply using gestures**.



ULTRA HD DISPLAY

High resolution ultra thin display for absolute integration into the partition. Choose a screen size 55" to 85".



TRUE SURROUND SOUND

Our sound system integrated into the surrounding walls, ceiling panels, and furniture produces sound that **harmoniously surrounds you**.

No bulky speakers and cables, complete integration.



TOUCH & PLAY

Always ready. No need to wait for the system to start up. **Just touch to wake** and start working...



THE BEST OF WINDOWS

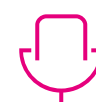
Our interface compliments Windows and brings you the most frequently used **tools quickly and efficiently**.



TOP NOTCH ACOUSTICS

In combination with our interior systems, our solution offers **unparalleled acoustics** and therefore **privacy for your meetings**. Every detail matters.

IDEAL SPACES



PRIVATE OFFICES



CONFERENCE ROOMS



MEETING ROOMS



INDUSTRIAL HALLS



GRAB ATTENTION DURING PRESENTATIONS

Present simply yet impressively. Your slides will look crisp thanks to the **4K UHD display**. Navigate through your slides **seamlessly by gesturing** them aside or using your device remotely. Hear crisp sound emitted from the glass, your conference table, or the surrounding walls, **for unique experience**.

ALL INTEGRATED INTO THE PARTITION.

WHEREVER YOU NEED A COMPLETE OFFICE

Discover the magic of real cooperation. Up to 10 touch points enable teamwork with colleagues and a 4K display with a conference camera connects you with anyone, anywhere in the highest quality.

PRESENT, DRAW, COMMENT AND SHARE.

SMART-i-WALL® MOBILE

Everything your (home) office needs in one design panel.
On a stand or on the wall.

Minimalist panel
Anti-reflective glass
Touch membrane
Stainless steel stand



FUNCTIONS AND FEATURES



ALL IN ONE

The minimalist panel covers **everything for work and entertainment**.

A 4K resolution display, touch control, web camera and even **a complete office suite**, browser and everything – just like on your computer.



LIKE ON YOUR PC

The system runs on Windows Enterprise and you have **everything that you are used to at your disposal**. Presentations, documents, websites, videos or photos.



PLUG&PLAY

Just hang it on the wall or place it on a stand, **plug it in** and start up the whole system with the touch of a button.

Are you starting a presentation or your favourite film?



BE SEEN

The Logitech MeetUp webcam was created especially for meeting rooms in mind. **The ultra-wide lens, recording optics, 5x zoom** and RightSight™ ensures you are always seen in the best light.



TOUCH CONTROL

Draw, mark up, write or comment – even more colleagues at once. **10 touch points** bring new opportunities for teamwork on joint projects. And if someone is missing, **simply send or share the content with them**.



CONNECT

Do you want to show a photo from your mobile phone or connect to a computer?

SMART-i-WALL® supports all types of data transfers – **iOS/Win/Android**. **USB** and **HDMI** ports are also available for connecting with a cable.

SUITABLE SPACES



HOME OFFICES



SEMINARS AND TRAINING



DESIGN STUDIOS

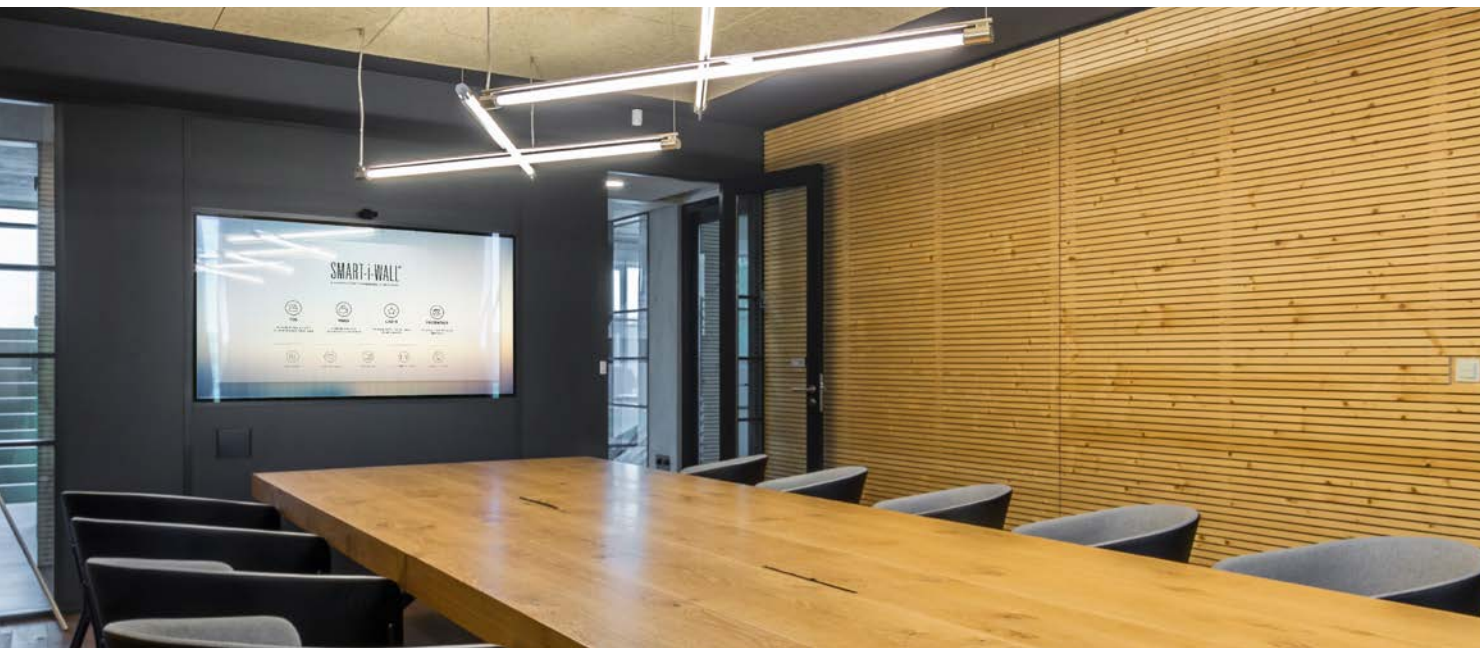


CREATIVE STUDIOS

FUSING DESIGN AND TECHNOLOGY

Modern communication and presentation technologies are nowadays commonplace in every office or conference room. TVs on the walls, conference cameras on the tables, ceiling speakers, and cables everywhere.

We took all those components and **integrated them** into our partition systems, and SMART-i-WALL® was born. **Interactive partition charged with technology.**



NO
CABLES



NO
FLIPCHARTS



NO
SPEAKERS



NO BULKY TV
AND ACCESSORIES



TOUCH
& PLAY

Always ready. No need to wait for the system to start up. **Just touch** to wake and start working...



TOTAL
INTEGRATION

High definition image, surround sound, and multimedia touch screen, **all integrated inside the partition.**



CLEAN
DESIGN

Complimented by our partitions the overall **look is modern and minimalist.** Just a glass surface configured in the partition system of your choice. No distracting accessories. **Only you and your presentation.**

Project specification



Double-sided
Screen 75"



RAVA
MICRA II



Glass
Table



LIKO-S | PRAGUE

Make use of both sides of your partition, as we did in our branch in Prague, with a double-sided SMART-i-WALL®.

One side serves a conference room for private meetings and the other serves as a workstation for quick discussions and collaborative standup meetings.

CONNECTIVITY & INTEGRATION

Thanks to the touch technology within the glass, **control is the same as on a tablet**. Collaborate on projects, share edits with your colleagues, connect with the integrated 4K conference camera, or stream **content wirelessly from your own device**.

EDIT, COLABORATE, SHARE!



CONNECTION AND SHARING

Connect any mobile device or laptop and **share content quickly and easily**. Your device can also serve as a remote touchpad.

Compatible with Win / Mac / Android



GIANT TABLET

Work as you normally do on your tablet or mobile device. The only difference is **the large, high resolution format**.

Browse through Windows using a single tap. Navigate the web or a presentation with classic gestures, such as a swipe or a zoom, or control the system like a pro with our **special preset gestures**.



CUSTOM APP

Best of both worlds. Use Windows and its **functionality as usual**, or enhance its useability with our application.

It is designed to simplify the user interface and to bring the most frequently used tools and functions **right to your fingertips**.

Project specification



Projection
150"



MICRA I



Glass



MENDEL MUSEUM | BRNO

Combining real world elements with virtual tour aspects is the hallmark of SMART-i-WALL® application as illustrated by this project. The wall can be made **transparent or interactive**, and the visitors can conduct experiments to learn about the way genetics work.

The exposition acquired a 4th dimension that fascinated even the youngest of visitors.

UNIQUE SOUND EXPERIENCE

No more bulky speakers. Let the partition or furniture generate the sound waves that you hear. We configure all elements for an **unique sound experience** and to support privacy.

Switch to **privacy mode automatically** during a conference call, or set it as a default state, and only the specified elements emit sound. Or, experience sound from all elements in unison with privacy mode turned off.

SURROUND YOURSELF WITH SOUND.



AMBIENT SOUND

Our unique system makes sound permeate the room **evenly and naturally**. No one has the best spot or sits too close to the source. **Everyone is literally surrounded by sound.**

Improve your focus at work by switching to **ambient mode** (automatically or manually) and let the **subtle sounds of nature** relax and refocus your thoughts.



NO CABLES

You do not have to worry about the placement of the speakers and how to get them there. Depending on the type of the room, we will **integrate and tune everything up for the optimal result.**



MAXIMUM PRIVACY

Our interior partitions meet the **most rigorous acoustic standards** and thus guarantee privacy for your meetings and calls.

Simply switch between **surround sound** and **privacy mode**.



HEAR THE GLASS

With the special placement of tactile transducers we allow the surface of the glass or a partition to **produce the sound that you hear**. For ideal acoustic results we enlist other surfaces in the room, such as tablespots and bookcases.

Be at the source.

SPECIFIED TO YOUR NEEDS.



SMART-i-WALL® and its technologies are **constantly being improved**. So, we take great care during the specification process, to ensure the specified components are right for the project.

Our sales and technical team are available to consult throughout the process.

TOUCH & PLAY

SMART-i-WALL® is powered by a mini PC which allows it to run as a **standalone solution** on which you may collaborate, stream or share content wirelessly. This standalone solution, is **activated with one touch**. No loading or slow startups.

*An optional All-in-one keyboard is available as a secondary peripheral device



Windows 10



IMAGE SOURCE 55-85"

Integrated **display** or **projection** – consult with our team to determine **the best solution for your space**. We will help you choose the most suitable option to maximize the impression on your guests and clients.

4K VIDEO CONFERENCE

An optional 4K camera can be integrated into both glass and solid partition systems. Switch to conference mode and **communicate and collaborate in ultra high definition**.

Rotate and change the viewing angle, as well as switch into the conference mode.

Additional accessories are available.



CUSTOM INTERFACE

Use Windows as you normally would or enhance its usability with our application. For **quick and simple control**, setup links to launch presentations or videos and maintain **easy access** to your files and favorite apps.

Optionally, you may **customize the interface** according to your needs or design manual.



AMBIENT SOUND

Sound system integrated into the glass, partition, ceiling, or furniture guarantees even sound distribution for all participants. Ambient nature sounds and other themes are ready to enhance **the mood of your workspace**.

The configuration of sound system is based on a consultation to determine design, placement, and functionality.



100% COMPATIBLE

We can integrate SMART-i-WALL® technologies into any of our partition systems. **MICRA I** is the best suited for projection. For built-in display, you can choose: **MICRA II** – frameless double glazed partition, **OMEGA** – classic framed partition or **RAVA**® – the trendy, frameless partition with negative gap.

Learn more about our partition systems on our website www.liko-partitions.com



Special request?

Thanks to our own dedicated development team, we are able to customize SiW according to your specifications.

Contact our sales team for more information.

LIKO-S: THE INNOVATION LEADERS

The **spirit of innovation** is constantly pushing us on. We have been **creating and developing** our own **partitions – glass, mobile, and interactive** – and we are proud to be among the best in Europe. Our design emphasizes **aesthetics, functionality, and acoustics**.



GLASS PARTITIONS

With or without a frame, our partitions meet the **highest demands** in terms of **design and acoustics**.



MOBILE WALLS

Rearrange your office space in a few minutes based on your needs.



LIKO-GLASS®

Graphic design, textiles, plants, or even metal. **We can laminate any material** up to 2 mm thick to create a glass partition that matches design requirement.



ACOUSTIC PANELS

Improve acoustic comfort with our acoustic panels, **SilentPET®**, made from **recycled PET bottles**.



Company headquarters:

LIKO-S, a.s.
U Splavu 1419
684 01 Slavkov u Brna
Czech Republic

+420 5 44 22 11 11 | info@liko-s.com

www.liko-s.com

Follow us on social media and be a part of our story



FACEBOOK



YOUTUBE



LINKEDIN